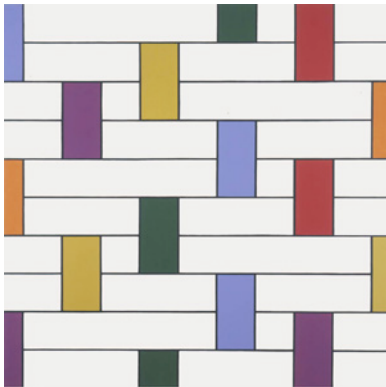


LENNON, WEINBERG, INC.

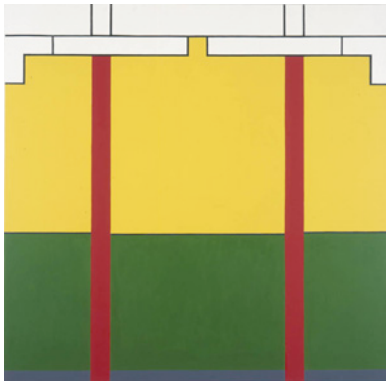
560 Broadway, Suite 308 New York, New York 10012-3945

Tel. 212 941 0012 Fax. 212 941 0098

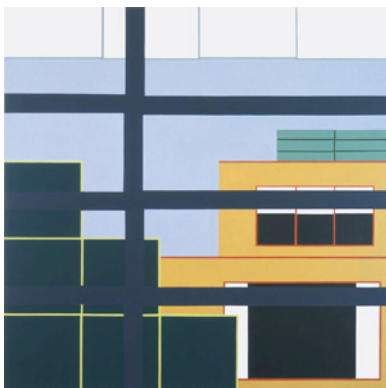
lennonweinberg@earthlink.net



Canon, 2002, 60 x 60", oil on canvas



Memory, 2002, 60 x 60", oil on canvas



Stephen Westfall: New Paintings 2002-2003
Lennon, Weinberg, Inc., September 25-November 1, 2003

Across the Street, 2002, 60 x 60", oil on canvas

Stephen Westfall

New Paintings 2002-2003

September 25-November 1, 2003

Opening Thursday, September 25, 6-8

A decade ago, Stephen Westfall relied on no more than a background color and a foreground grid to compose radiant, evocative abstract paintings. Since that time he has let his eye and intuition reveal possibilities latent in this straightforward relationship of color and form. During the past two years, Westfall has been working within a dramatically relaxed framework defined by color and the grid and extending his use of that vocabulary beyond the pathways of modernism and minimalism.

Westfall's structures have been characteristically off-kilter and his colors richly suggestive. Now the organization of verticals and horizontals and of foreground and field is freer and much more varied. While sharing essentially the same elements – narrow lines, wide bands and areas of color – each of the nine paintings in the exhibition is resolved quite differently. It is remarkable for a group of paintings made within a year's time to exhibit such diversity.

Several titles refer to music (*Yarbird*, *Mingus*, *Canon*); the idea of music and the infrastructure of notes, chords and rhythms accords with the visual experience of the paintings. So too does a title like *Across the Street* reinforce the painting's nearly literal depiction of windows, buildings and sky. With a light touch and a sense of humor, Westfall brings an encounter of observation and abstraction to an unexpected conclusion in one particularly interesting new painting.

Page two

.....

Stephen Westfall was born in 1953. He received an MFA from the University of California, Santa Barbara in 1978 and has lived and worked in New York City since that time. He teaches at the School of Visual Arts and at the graduate program at Bard College. He has recently been visiting artist at the San Francisco Art Institute and Cornell University.

This is his third solo exhibition at Lennon, Weinberg; previous exhibitions took place in 1999 and 2001.

He has exhibited regularly in New York for twenty years, represented by Lennon, Weinberg (1999-present), Andre Emmerich Gallery (1995-1998), and Daniel Newburg (1987-1994). He shows his work in Europe at Galerie Wilma Locke in St. Gallen, Switzerland, Galerie Jorg Paal in Munich, Germany and at Galerie Zurcher in Paris, France.

Westfall received an Award from the American Academy of Arts and Letters in 2002, and the Academy purchased a painting for the collection of the Kemper Museum of Contemporary Art in Kansas City. Westfall's work is also included in the collections of the Baltimore Museum of Art, Munson-Williams-Proctor Institute, the University Art Museum at Santa Barbara, the Albertina Museum in Vienna and the Louisiana Museum of Modern Art in Denmark.

Stephen Westfall is a noted writer as well as a painter. He regularly contributes articles to Art in America, writing in recent years about artists such as Ellsworth Kelly, James Castle and Richard Diebenkorn.

.....

An exhibition of Westfall's monotypes and lithographs will take place at Bruno Marina Gallery at 372 Atlantic Avenue in Brooklyn during October and November. The exhibition opens on October 2. Call 718-797-2077 for information.

Please contact Jill Weinberg Adams or Brandy Keenan at 212 941 0012 (phone), 212 941 0098 (fax) or lennonweinberg@earthlink.net (email) for photographs and additional information

#####